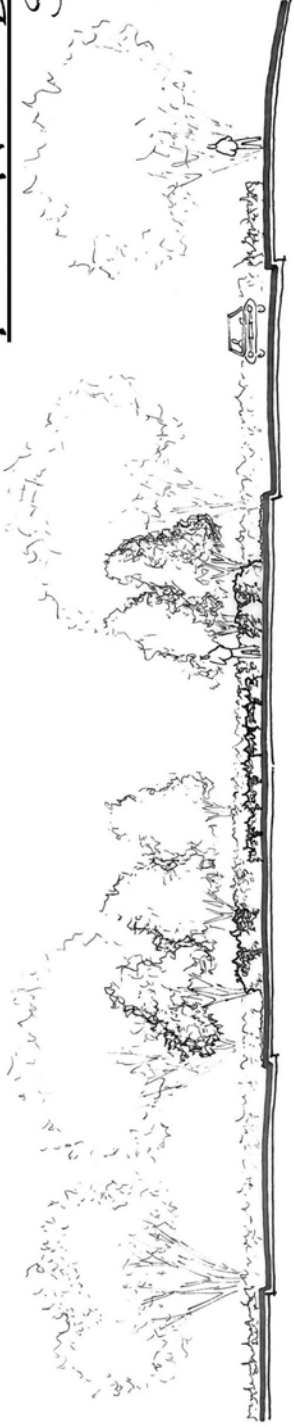


Park West Development

Streetscape Studies

Florence, SC

SGA ARCHITECTURE
 Parley's Island / Charleston
 450 King Street - 29403
 Phone (843) 554-4206
 www.SGAarchitecture.com



SECTION
NOT TO SCALE

PROPOSED CROSSWALK
CONNECTING PEDESTRIAN TRAIL
TO WATER FEATURE

PROPOSED EVERGREEN SHRUB MASSING
- DWARF YAUPON HOLLY
- SHORE JUNIPER
- ROSEMARY

PROPOSED WALKWAY FOR
PEDESTRIAN ACCESS TO WATER
FEATURE & CONNECTION TO
GREENWAY TRAIL

PROPOSED SPECIALTY
PAVEMENT

FUTURE R.O.W. EXTENSION

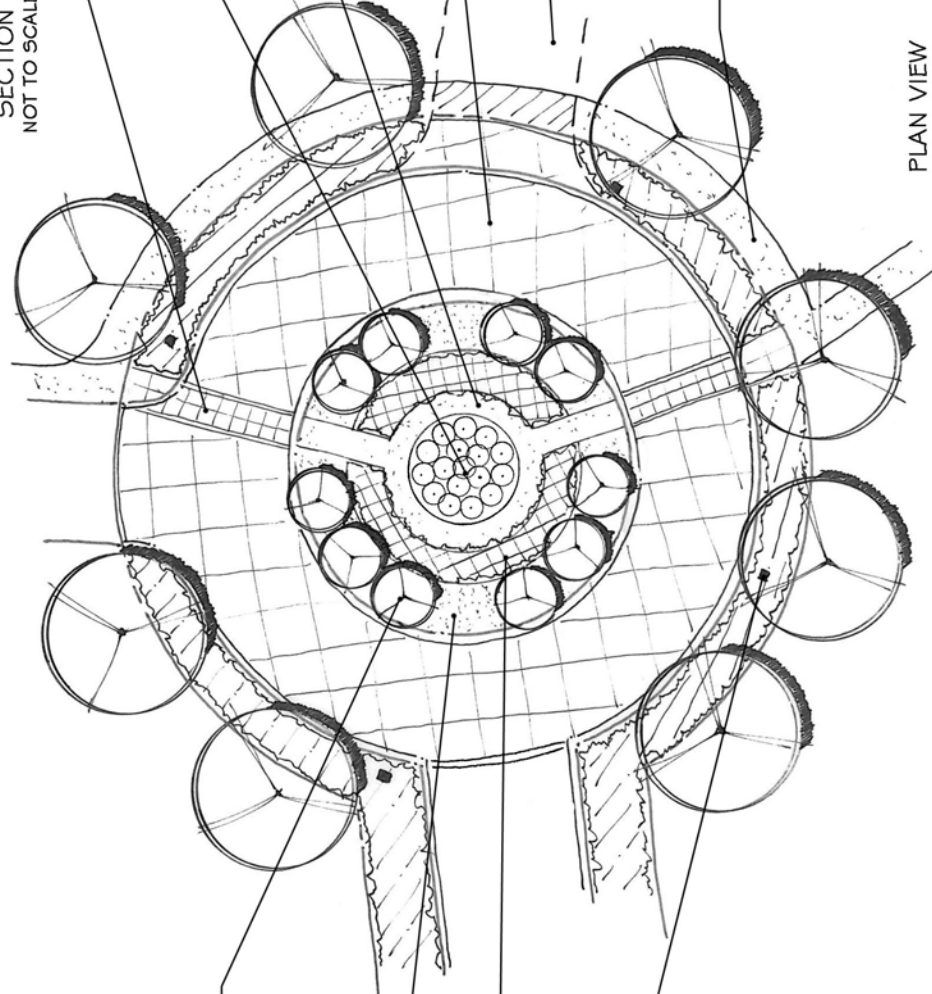
GREENWAY TRAIL

SMALL ORNAMENTAL TREE
- CRAPE MYRTLE
- EASTERN REDBUD
- FLOWERING CRABAPPLE
- PURPLE LEAF PLUM

SODDED AREAS

SHRUB MASSING
- HAMELN GRASS (PENNISSETUM)
- MISCANTHUS GRASS
- OTTO LUYKEN LAUREL

TYPICAL LIGHT
STANDARD (60' O.C.)



PLAN VIEW

TRAFFIC CIRCLE
PLANTING ENLARGEMENT
STUDY OPTION 3A

March 11, 2009
Scale: 1" = 20'



NORTH

